

MAIN MACROECONOMIC
INDICATORS

REPUBLIC OF
POLAND

April
2009



Territory: 312 685 km²
Population: 38.1 mln
Capital city: Warsaw
Currency: the Polish zloty

Ministry of Economy, Analyses and Forecasting Department

Poland's macroeconomic performance in 2008-2009

Specification	Unit	2008	IV 2008	IV 2009	I-IV 2009
GDP	%	104.9			100.8 ⁴
Consumption	%	105.9			103.9 ⁴
- individual consumption	%	105.4			103.3 ⁴
Gross capital formation	%	104.2			76.2 ⁴
- gross fixed capital formation	%	108.1			101.2 ⁴
Prices					
Year-on-year price index of consumer goods and services (CPI)	%	104.2	104.0	104.0	103.4
Year-on-year price index of sold production of industry (PPI)	%	102.2	102.2	105.1	105.0
Production¹	%				
Sold production of industry	%	102.5	114.4	87.6	89.9
Construction and assembly production	%	110.9	120.9	100.5	99.8
Wages and salaries					
Average wages and salaries in the national economy, of which:	PLN	2 944			
- enterprise sector	PLN	3 186	3,222	3,295	3,267
Labour market					
Average employment in enterprise sector	thous.pers.	5,392	5,382	5,309	5,358
Unemployment rate (as of the end of the period)	%	9.5	10.3	11.0	11.0
Current account balance	m EUR	-19,732 ²	-1,960 ^{2,3}	75 ^{2,3}	-79 ^{2,4}
Foreign trade acc. to CSO					
Trade balance	m EUR	-24,762 ²			-1,924 ⁴
- exports	m EUR	114,566 ²			22,705 ⁴
- imports	m EUR	139,328 ²			24,629 ⁴

1 - data concerns entities which employs more than 9 persons

2 - provisional data

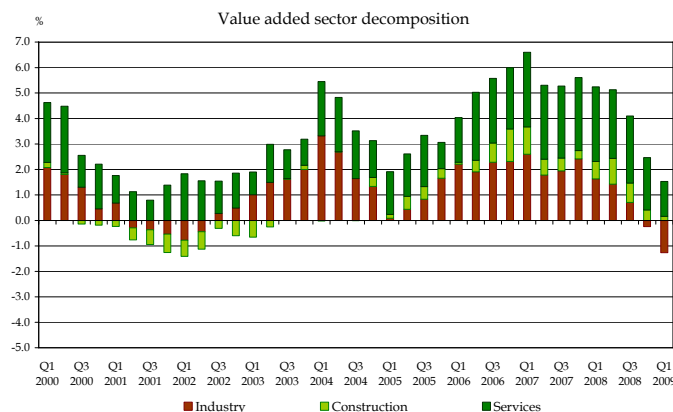
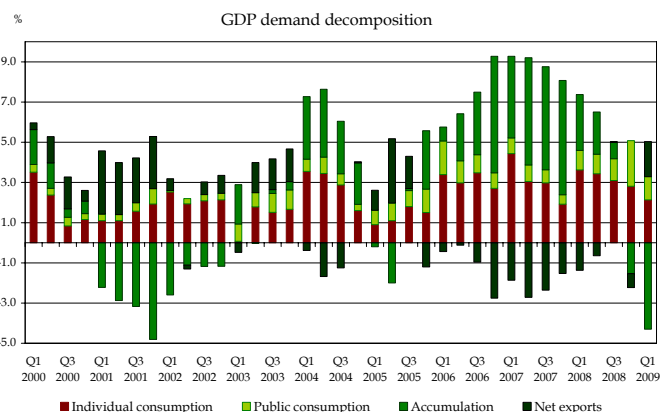
3 - data for March

4 - data for period of January-March

In the 1st q. 2009, according to CSO, GDP increased by 0.8%. The negative contribution was made by domestic demand.

GDP growth in 2004-2009

	2004				2005				2006				2007				2008				2009
R/R	5.3				3.6				6.2				6.7				4.9				
	I-III	IV-VI	VII-IX	X-XII	I-III	IV-VI	VII-IX	X-XII	I-III	IV-VI	VII-IX	X-XII	I-III	IV-VI	VII-IX	X-XII	I-III	IV-VI	VII-IX	X-XII	I-III
R/R	6.9	6.0	4.8	4.0	2.4	3.2	4.3	4.4	5.4	6.3	6.6	6.6	7.4	6.5	6.5	6.5	6.1	5.9	5.0	2.9	0.8

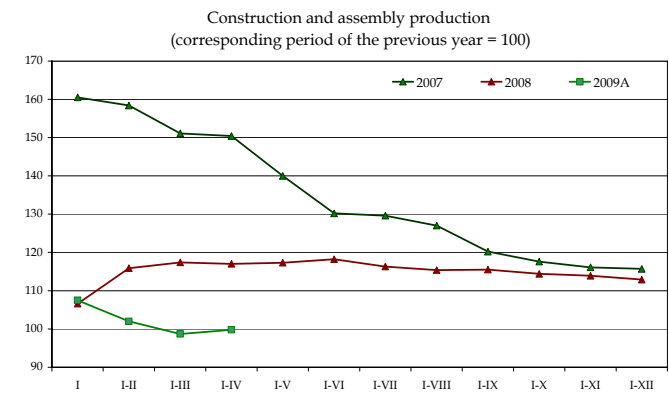
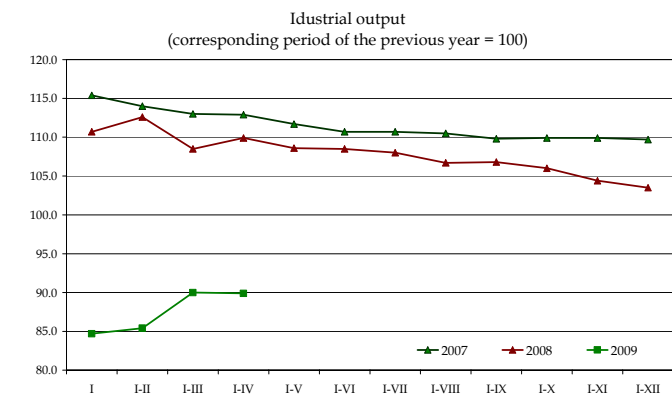


A - In accordance to change of groups of classification (PKD 2007) data for 2009 are not fully comparable with previous data.
Compare to CSO explanation (in polish) - http://www.stat.gov.pl/cps/rde/xbcr/zus/PUBL_Ulotka_PKD.pdf

In the period of January-April 2009 (comparing to the corresponding period of the previous year):

- A drop in **sold industrial production** amounted to 10.1%. The biggest decrease was recorded in mining (14.3%).
- An decrease in **construction and assembly production** was recorded (0.2%).
- **Consumer Price Index** was at the level of 3.4%.
- An amount of **registered unemployment** amounted to 1,720 thousand persons (increase by 7.1%).
- **Registered unemployment rate** made up 11.0%.
- **Average monthly wages and salaries in enterprise sector** amounted to PLN 3,267 and was higher by 5.9% (in nominal terms).
- **Average monthly retirement pay and pension from non-agricultural social security system** increased by 10.0%, and individual farmers by 6.5% (in nominal terms).
- **Execution of revenues** stood at 29.5% and expenditures – 32.6% of the amount planned in the Budgetary Law, and budget deficit amounted to PLN 15.3 bn.
- The Monetary Policy Council **reduced interest rates** two times by 1.25 percentage point in total.
- **The Polish currency** was weaker against US dollar and euro.
- At the end of March 2009 the **cumulative current account balance** deficit was lower than in 2008 by EUR 4,653m.

January-April 2009: sold production of industry decreased by 10.1% and construction and assembly production was lower by 0.2% (comparing to the corresponding period of the previous year).



Indices of sold production of industry and construction and assembly production

		I	I-II	I-III	I-IV	I-V	I-VI	I-VII	I-VIII	I-IX	I-X	I-XI	I-XII
Sold production of industry	2008	110.7	112.6	108.5	109.9	108.6	108.5	108.0	106.7	106.8	106.0	104.4	103.5
	2009A	85.1	85.4	90.0	89.9								
Construction and assembly production	2008	106.6	115.9	117.4	117.0	117.3	118.2	116.3	115.4	115.5	114.4	113.9	112.9
	2009A	107.4	102.0	98.7	99.8								

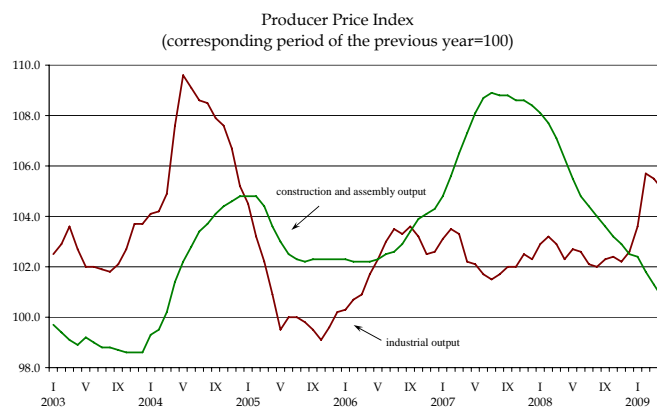
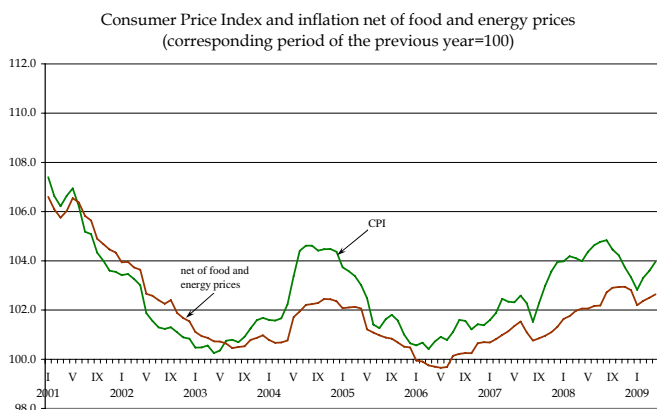
A - data not fully comparable

January-April 2009: price index of consumer goods and services reached 3.4%, of sold industrial production – 5.0%, and price index of construction and assembly production – 1.6% (comparing to the corresponding period of the previous year).

Prices indices

		I	I-II	I-III	I-IV	I-V	I-VI	I-VII	I-VIII	I-IX	I-X	I-XI	I-XII
Price indices of sold production of industry	2008	102.9	103.1	103.0	102.8	102.8	102.8	102.7	102.6	102.5	102.6	102.5	102.6
	2009A	103.0	104.7	105.0	105.0								
Price indices of consumer goods and services	2008	104.0	104.1	104.1	104.1	104.1	104.2	104.3	104.4	104.4	104.4	104.3	104.2
	2009	103.1	103.1	103.3	103.4								
Price indices of construction and assembly production	2008	108.1	107.9	107.6	107.3	106.9	106.5	106.2	105.9	105.7	105.4	105.2	105.0
	2009A	102.4	102.1	101.8	101.6								

A - data not fully comparable



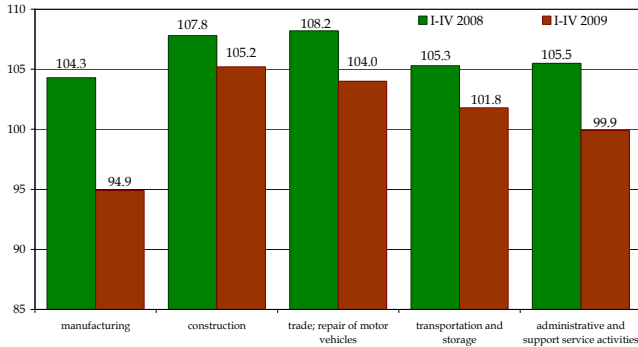
January-April 2009: registered unemployment rate stood at 11.0%, employment in enterprise sector amounted to 5,358 thousand persons and dropped by 0.1% (comparing to the corresponding period of the previous year).

Unemployment rate

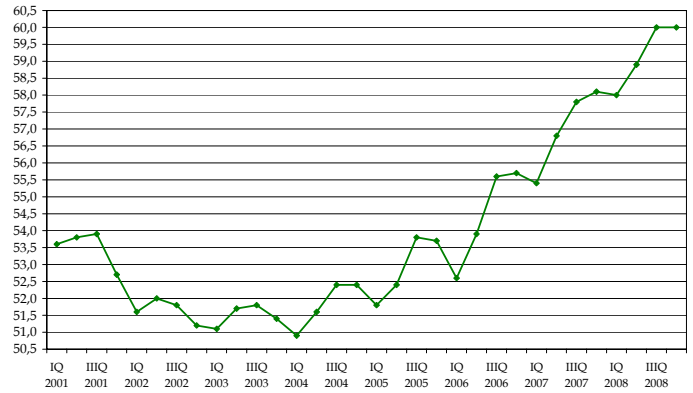
	2005	2006	2007	2008	I 08	II	III	IV	V	VI	VII	VIII	IX	X	XI	XII	I 09	II	III	IV
Registered unemployment	17.6	14.9	11.2	9.5	11.5	11.3	10.9	10.3	9.8	9.4	9.2	9.1	8.9	8.8	9.1	9.5	10.5	10.9	11.2	11.0
LFS*	17.7	13.8	9.5	7.0		8.1			7.1			6.6			6.7			n.a.		n.a.

* LFS – Labour Force Survey

Dynamics of average monthly employment in enterprise sector (corresponding period of the previous year=100)

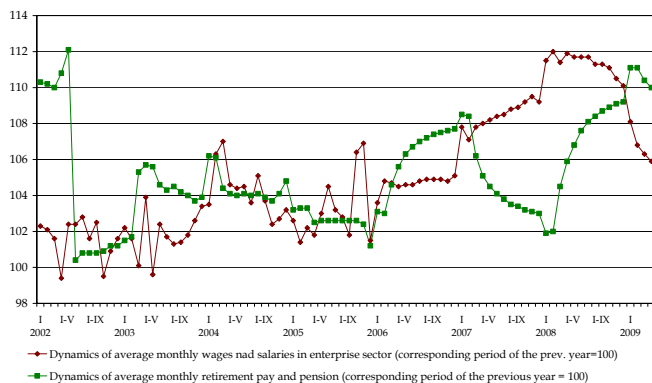


Employment rate (acc. to LFS)

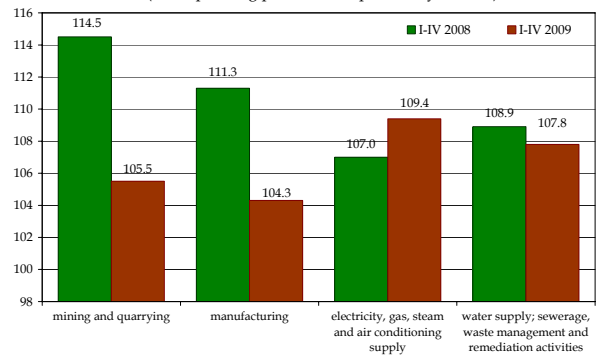


January-April 2009: average wages and salaries in enterprise sector stood at PLN 3,267 and were higher by 5.9% (by 2.6% in real terms); (comparing to the corresponding period of the previous year).

Salaries, wages verso social security benefits

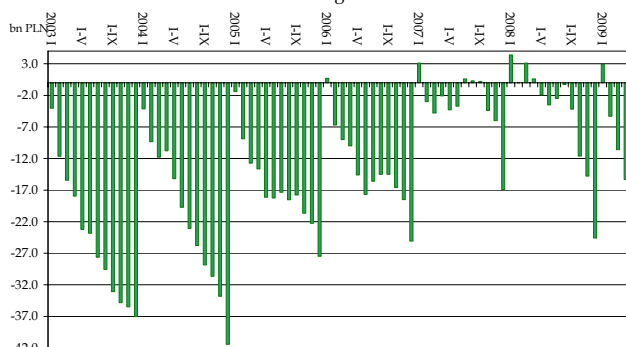


Dynamics of average monthly wages and salaries in enterprise sector (corresponding period of the previous year=100)

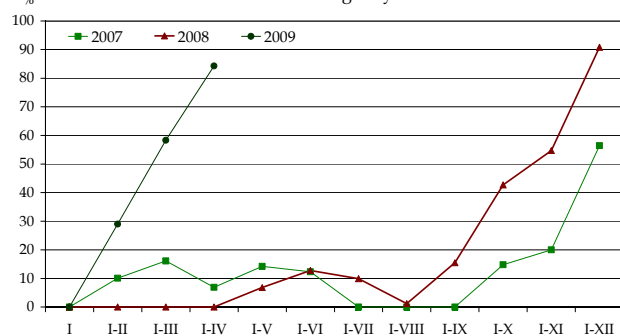


January-April 2009: state budget revenues ensured execution of the Budgetary Law in 29.5%, expenditures in 32.6%, the budget deficit amounted to PLN 15.3 bn.

Results of state budget in 2003-2008



Execution of Budgetary Law

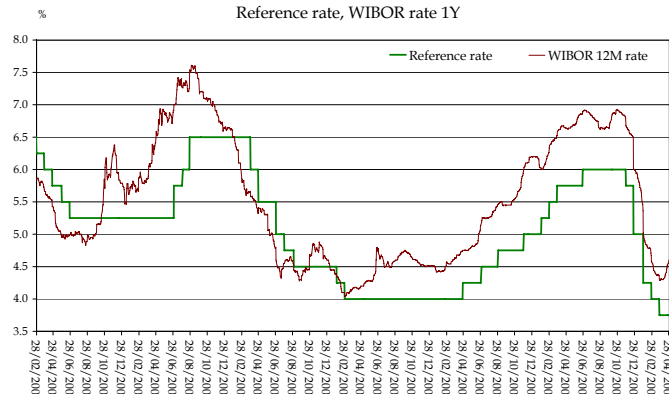
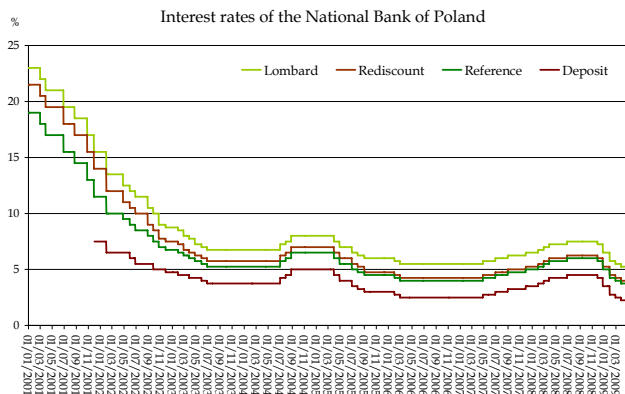


	Budgetary Law 2009	Performance		
		I-IV 2009	I-IV 2008	
	in bn PLN	in %		
REVENUES	303.0	89.3	29.5	32.1
Indirect taxes	178.1	52.2	29.3	32.4
CIT	33.1	10.6	32.1	43.3
PIT	40.3	12.3	30.6	35.3
EXPENDITURES	321.2	104.6	32.6	29.1
Domestic debt servicing	26.6	8.7	32.9	22.5
Foreign debt servicing	6.2	4.0	65.5	55.8
Subventions to the Pension Fund	15.9	5.2	33.0	30.1
Subventions to the Social Insurance Fund	31.0	10.7	34.6	22.4
General subventions to local self-government entities	45.3	19.1	42.2	42.6
DEFICIT	-18.2	-15.3	84.3	-
DEFICIT FINANCING SOURCES	18.2	15.3	84.3	-
DOMESTIC	12.6	14.7	116.5	2.5
Treasury bonds	37.4	16.3	43.5	21.7
Revenues from privatisation	12.0	0.5	3.9	6.2
Pre-financing actions with EU sources	-3.7	-2.4	63.7	-
FOREIGN	5.6	0.6	11.6	-

January-April 2009: MPC cut interest rates by 1.25 p.p. in total.

Interest rates of the National Bank of Poland

	Lombard	Rediscount	Reference	Deposit
December 24, 2008	6.50	5.25	5.00	3.50
January 28, 2009	5.75	4.50	4.25	2.75
February 26, 2009	5.50	4.25	4.00	2.50
March 26, 2009	5.25	4.00	3.75	2.25



January-March 2009: according to the provisional CSO data trade deficit shaped at a level of EUR 1,924m and was lower by EUR 3,322m, exports decreased by 20.3%, and imports by 27% (comparing to the corresponding period of the previous year).

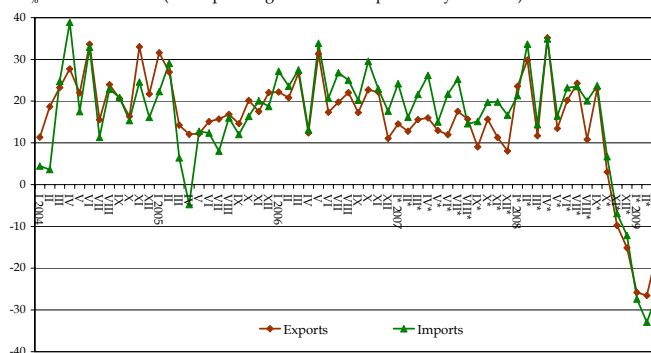
Foreign trade in mln EUR (CSO data)

	2007	2008	I-III 2008	I-III 2009
Balance	-18,551	-24,762	-5,246	-1,924
Exports	101,839	114,566	28,470	22,705
Imports	120,390	139,328	33,716	24,629

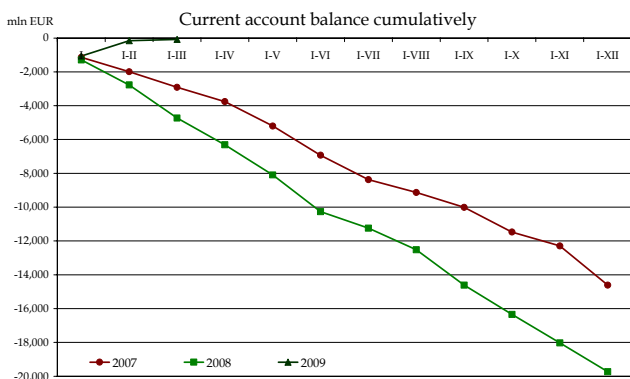
Foreign trade in mln EUR (NBP data)

	2007	2008	I-III 2008	I-III 2009
Balance	-12,383	-16,155	-3,247	-502
Exports	105,858	118,722	30,144	23,248
Imports	118,241	134,877	33,391	23,750

Exports and imports acc. to NBP data (corresponding month of the previous year = 100)



January-March 2009: current account deficit was higher than in 2008 by EUR 4,653m and amounted to EUR -79m.

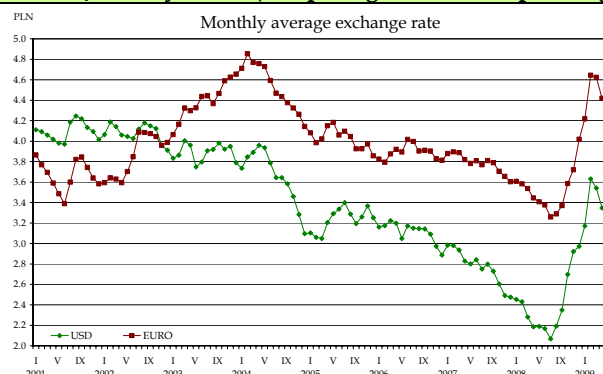


Current account balance

	2003	2004	2005	2006	2007	I-III 2008	2008	I-III 2009
	-4,109	-8,145	-3,005	-7,453	-14,609	-4,732	-19,732	-79

	2008	I-III 2008	I-III 2009
in mln EUR			
Polish direct investment abroad	-2,349	-893	-454
Foreign direct investment in Poland	11,087	3,442	1,925
Portfolio investment - assets	1,569	351	117
Other investment - assets	4,774	-1,931	4,179
Official reserve assets	2,368	-5,640	-138

January-April 2009: the zloty was weaker against the US dollar and against euro. The EUR/PLN exchange rate increased by 26.2% and USD/PLN by 46.2% (comparing to the corresponding period of the previous year).



Exchange rates of the dollar and the euro (NBP data)

		IV 2008	VI	VIII	X	XII	III 2009	IV
1 USD	end of month	2.2267	2.1194	2.2691	2.8472	2.9618	3.5416	3.2859
	monthly average	2.1852	2.1694	2.1926	2.6980	2.9715	3.5412	3.3480
1 EUR	end of month	3.4604	3.3542	3.3460	3.6330	4.1724	4.7013	4.3838
	monthly average	3.4444	3.3760	3.2884	3.5855	4.0177	4.6237	4.4193

Source: Central Statistical Office, National Bank of Poland, Ministry of Finance.